



SURGERY THEATRE

Medical Devices and Kits for Safe and Effective Positioning in the Operating Room

www.euroausili.it

Euro Ausili S.r.l.

Stabilimento e Showroom:
Via R. Cuttica, 43/45
20025 Legnano (MI) - Italy

Stabilimento:
Via Genova, 21
20020 Villa Cortese (MI) - Italy

info@euroausili.it
Tel. +39.0331.542850

Surgery theatre

EURO AUSILI responds to what is indicated in the recommendations of the guidelines and the recent scientific indications regarding the correct management of surgical positioning by developing an innovative line of specific medical devices dedicated to the operating room. The specially designed products represent innovative solutions of the highest level, effective in safe surgical positioning.

Made in Italy



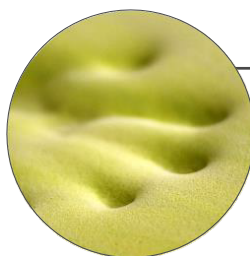
Patent Pending

GREEN SUPPORT

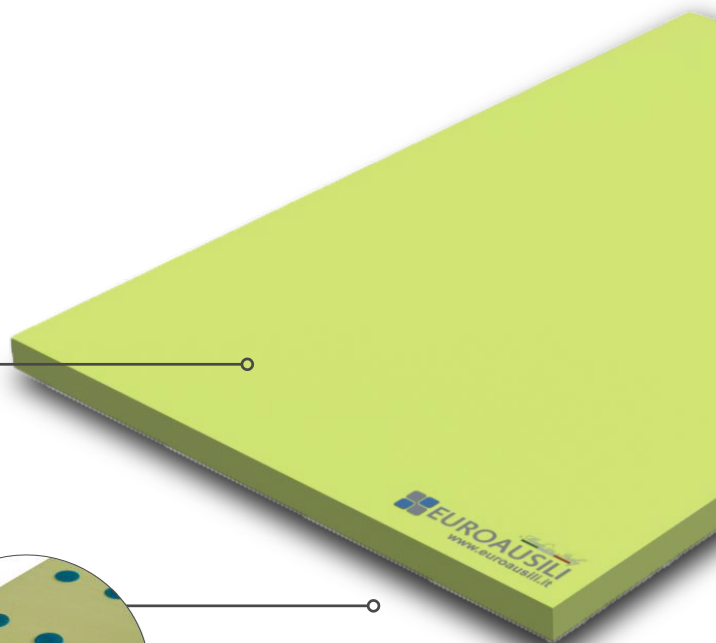
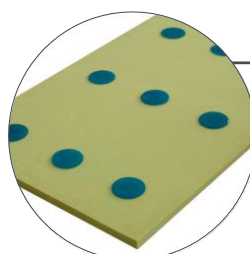
The patented GREEN SUPPORT line was designed and purposely manufactured to⁽¹⁾:

- + Prevent slipping forces.
- + Prevent friction forces.
- + Position the patient correctly on the operating table: protecting the bony protuberances and the ulnar nerve by passively modeling itself to the shape of the body and providing a high level of comfort.
- + Preventing the risks of pressure injuries: avoids exceeding the pressure limit threshold exerted by the patient on the operating bed by increasing the contact surface.

Shape memory
high density polyurethane
support: it adapts to
physiological curves of the
patient providing support
and
comfort.

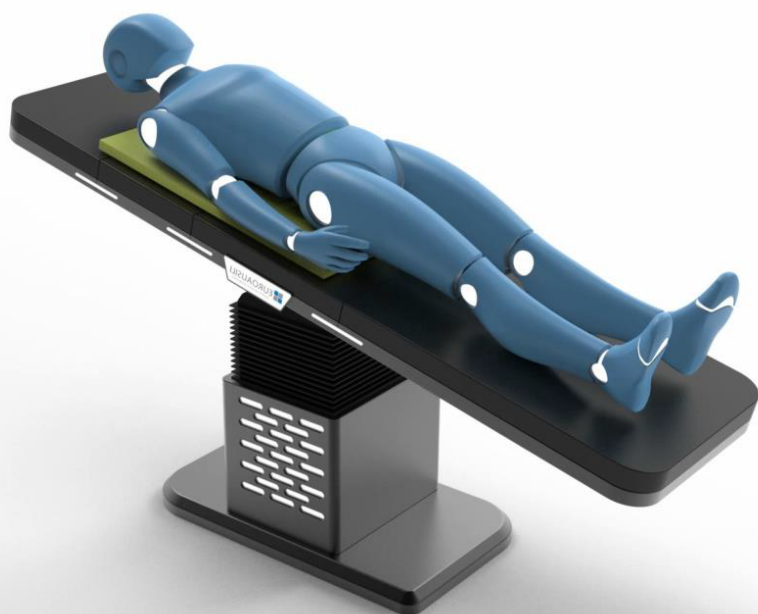


Innovative adhesive inserts in
polyurethane gel: they anchor to the
table surgery with a single gesture.



⁽¹⁾ The data were supported by an exploratory study on mean pressures and surfaces, conducted on a sample of 81 subjects, aged between 23 and 60, both males and females, considering the variables weight, height, temperature, age. The measurements were detected through the use of capacitive sensors (Xsensor©), which confirmed a statistically significant reduction compared to non-use.

Characteristics



SURGICAL APPLICATIONS:

Green Support is the ideal support for procedures surgical which:

- + Involve clients of all ages: pediatric, adult and elderly patients.
- + Last more than 2 hours (for assisted with BMI <18 even in shorter procedures).
- + Require Trendelenburg or anti Trendelenburg positions, both medium and strong.
- + Involve individuals at risk of developing pressure sore and / or with a BMI > 30.

OPERATING ROOM KIT

To further facilitate positioning, the OPERATING ROOM KIT is available.

It includes:

- + GREEN SUPPORT
- + Sliding sheet EASY SHEET
- + Seat belts.



NON-SLIP:

safe and stable patient positioning.



ADHESIVE:

high anchorage to the operating table, which can be carried out in a single step, without auxiliary supports to be fixed to the operating table, so that remains completely free on all sides, allowing any accessories of the operating bed useful for the intervention to be fixed without limitations.



SINGLE USE:

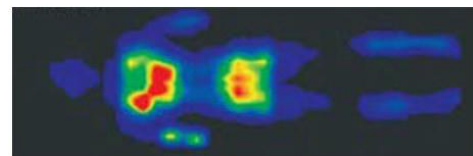
eliminates the risks of hospital cross-border transmission, easy to apply and remove.



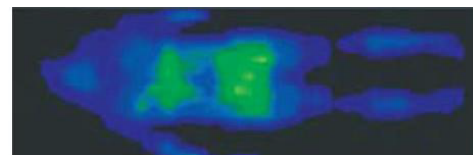
ERGONOMIC:

adapting to the patient's anatomy significantly increases the contact surface, decreases pressure peaks, preventing the risk of pressure injury.

BEFORE



AFTER



Surgery theatre TECHNICAL SHEET

GREEN SUPPORT

| CODE | DESCRIPTION | DIMENSIONS |
|---------|-------------------------|------------|
| PL610/M | GREEN SUPPORT MEDIUM | 50X75 cm |
| PL610/L | GREEN SUPPORT LARGE | 50x190 cm |
| PL610/B | GREEN SUPPORT SMALL | 13x46 cm |

Adjustable height for all the codes listed above: from 2.5 cm to 7.5 cm

KIT FOR THE OPERATING ROOM

| CODE | DESCRIPTION |
|------------|---------------------------------|
| KITPL610/M | KIT: PL610/M, EASY SHEET, BELTS |

Surgery Department Line devices are CE marked and are class I medical devices, according to rule I of Annex VIII of Regulation (EU) 2017/745.

Reference bibliography:

National Pressure Ulcer Advisory Panel, European Pressure Ulcer Advisory Panel and Pan Pacific Pressure Injury Alliance. Prevention and Treatment of Pressure Ulcers: Quick Reference Guide. Emily Haesler (Ed.). Cambridge Media: Osborne Park, Australia; 2019.

EORNA Best Practice for perioperative care First edition March 2015 Second edition November 2020.

Lubinu F., Laurini F., The reduction of the average pressure exerted by the patient on the bed and the increase of the contact surface. 2019

Euro Ausili S.r.l.

Stabilimento e Showroom:
Via R. Cuttica, 43/45
20025 Legnano (MI) - Italy

Stabilimento:
Via Genova, 21
20020 Villa Cortese (MI) - Italy

www.euroausili.it

info@euroausili.it
Tel. +39.0331.542850

